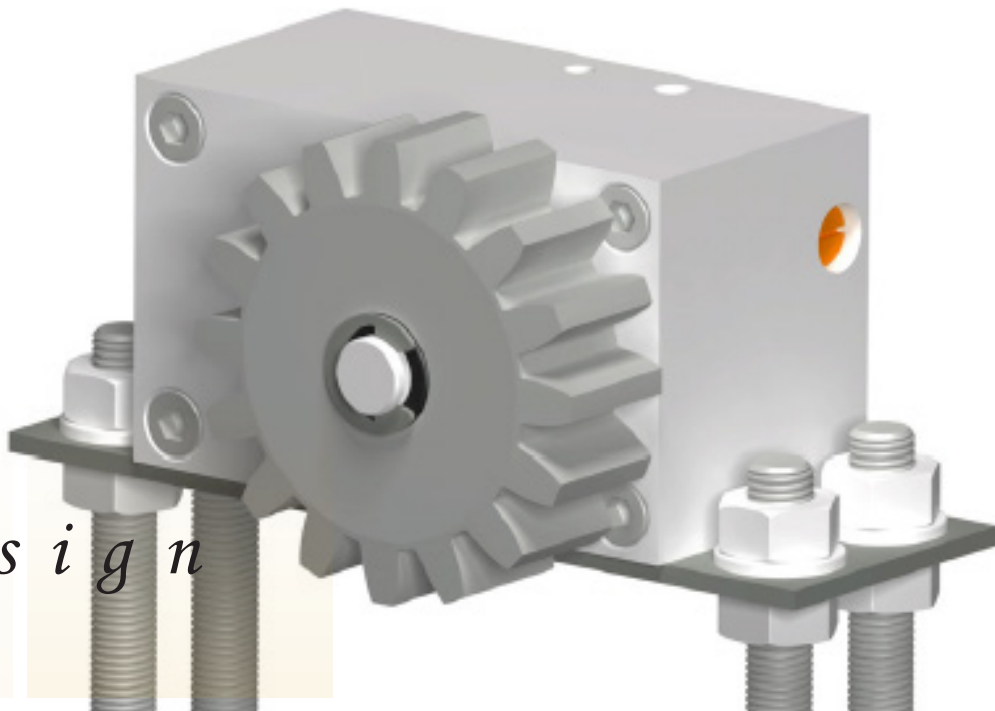




HYDRAULIC SHOCK ABSORBER FOR SLIDING DOOR CONTROLGIR



D e s i g n

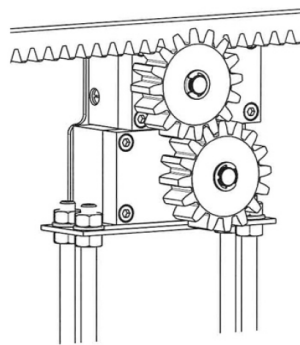
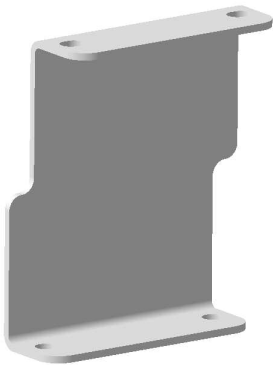
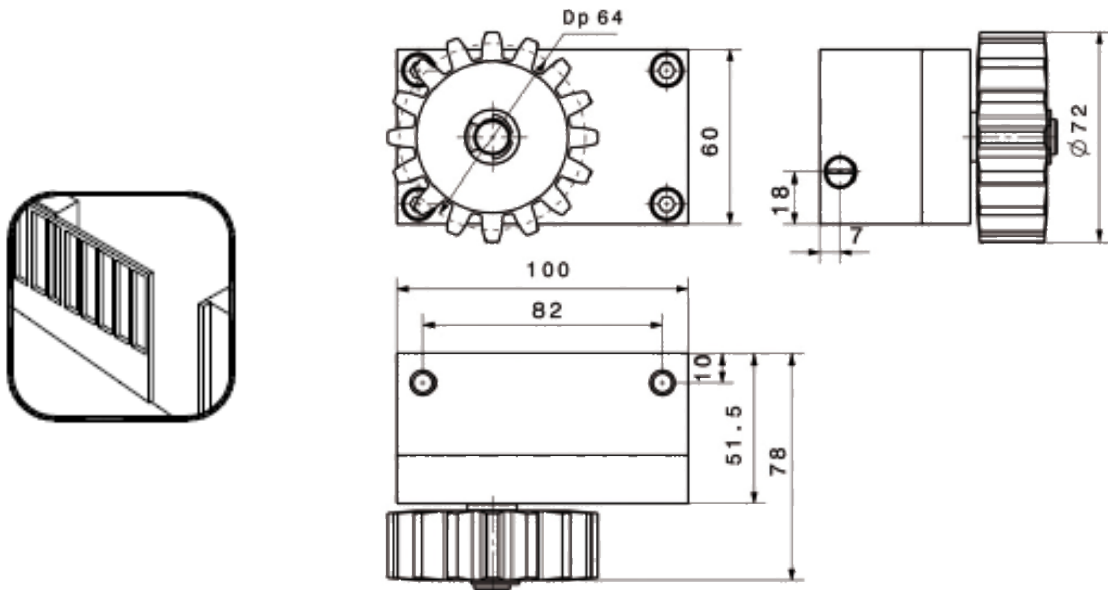
P o w e r

R e l i a b i l i t y

The CONTROLGIR radial shock absorber has been developed to adjust and control the speed of the door in systems with a slope throughout their path. For safety reasons, the door must not be allowed to gain speed when the automation system is unlocked. If it does not have a brake or compensation system, it will tend to move and speed up in the direction of the slope, leading to dangerous uncontrolled movement. The shock absorber only provides resistance in one direction of rotation; the opposite side is completely free.

This accessory is suitable for module 4 and 5 automatic doors with rack.

CONTROLGIR is manufactured using anti-corrosion materials for outdoor use.



► Support for fixing two M4 CONTROLGIR units, to increase the brake's maximum load to 14 Nm.

| SPECIFICATIONS TECHNICAL | VERSION | |
|-----------------------------|------------------|------------------|
| | CONTROLGIR M4 | CONTROLGIR M5 |
| PINION MODULE | M4 | M5 |
| N°. OF COGS | Z16 | Z13 |
| LIQUID TYPE | SILICONE 3000 | |
| OPERATING TEMPERATURE | -15°C +70°C | |
| MAXIMUM LOAD | 7 Nm | |
| BRAKE DIRECTION | LEFT OR RIGHT | |
| LOAD ADJUSTMENT | YES | |